

HIGEN^S

MDA7000 SERIES



SERVO

MDA7000



HIGEN
MOTORS
www.higenmotor.com/eng

MDA7000 SERIES

MDA7000-H



RS485/422

LAN

I/O
(In 64, Out 48)

RS232C

S/W

I/O
(CN 4)

I/O
(CN 1)

ABS

17bit ,131072ppr

* (BATTERY 가)

I/O (CN4)

- : 10 :8
- 1CH (2.5MHz)

I/O (CN1)

- : 12 :10
- 1Ch 500KHz
- Load cell A/D 2Ch
- 16bit, ±12V
- D/A 2Ch
- 12bit, ± 5V

MDA7000-L



RS485/422

RS232C

I/O
(CN 1)

ABS

17bit ,131072ppr

* (BATTERY 가)

I/O (CN1)

- : 12 :10
- 1Ch 500KHz
- Load cell A/D 2Ch
- 16bit, ±12V
- D/A 2Ch
- 12bit, ± 5V



MDA7000



PC Ethernet Network

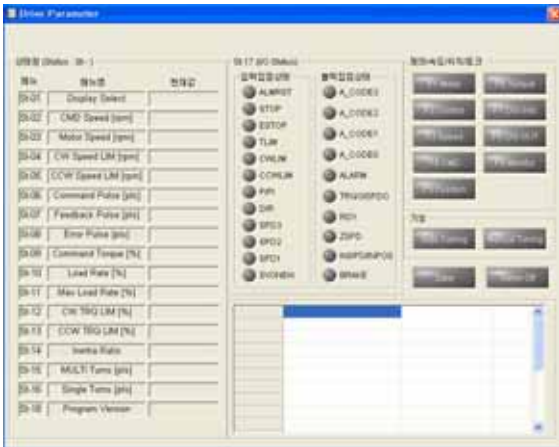


MDA7000 Specifications

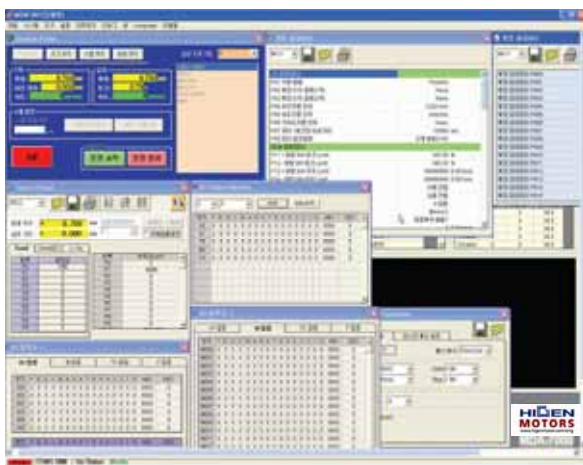
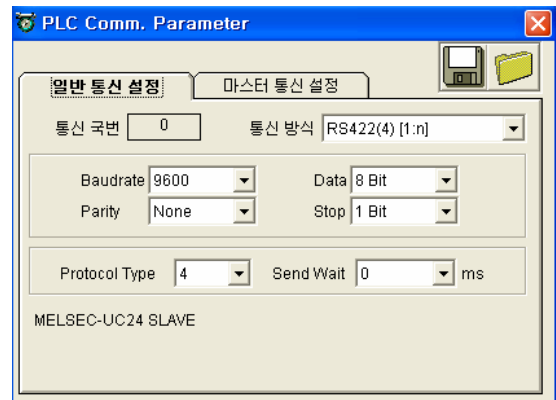
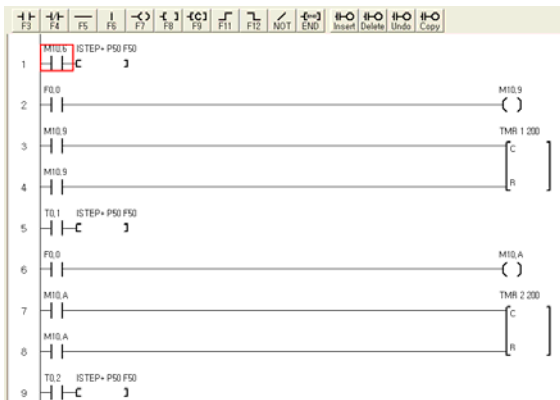
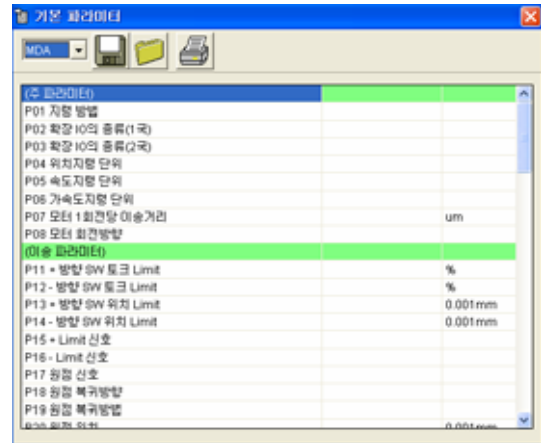
| | | MDA-7000H | MDA-7000L |
|--------------|----------|---|---|
| | |  |  |
| | | 50W ~ 3.5KW | 50W ~ 3.5KW |
| | | 3 200~230V, 50/60 Hz ±5% | 3 200~230V, 50/60 Hz ±5% |
| | | DC 24V, 1A | DC 24V |
| | | 17bit (131,072pulse) (가) | 17bit (131,072pulse) (가) |
| | | 0.4msec | 0.8msec |
| I/O | | : 12 : 10 | : 12 : 10 |
| | | : 10 (0.5u ~ 110us) : 8 | X |
| | | : 32 + 32 : 24 + 24 MCU-EL 2 가 | X |
| | | 500KHz 1Ch (A /B , / , /) | 500KHz 1Ch (A /B , / , /) |
| | | 2.5MKHz 1Ch (A /B , / , /) | X |
| | | 1 (A /B) 1Ch | 1 (A /B) 1Ch |
| | | Load Cell A/D 2Ch 16Bit (-12V ~ +12V) Min/Max | Load Cell A/D 2Ch 16Bit (-12V ~ +12V) Min/Max |
| | | D/A 2Ch 12Bit (-5V ~ +5V) Min/Max | D/A 2Ch 12Bit (-5V ~ +5V) Min/Max |
| | RS232C | 1EA | 1EA |
| | RS422 | 1EA | 1EA |
| | Ethernet | 1EA 100/10 Base-T | X |
| Latch | | Latch 가 | Latch 가 |

(GUI)

Graphic User Interface



SERVO DRIVE



GUI PROGRAM TOOL



Homepage : <http://www.higenmotor.com>

본사 (경인영업) : ☎ 02-369-8213~4 / FAX) 02-369-8229
부산사무소 : ☎ 051-710-5032~3 / FAX) 051-710-5034

서비스 연락

경인 : ☎ 02-369-8215
공장 : ☎ 055-281-8407

※ 본 제품의 사양은 품질 개선을 위하여 예고 없이 변경될 수 있으므로
제품 구입 시 전화문의 바랍니다.